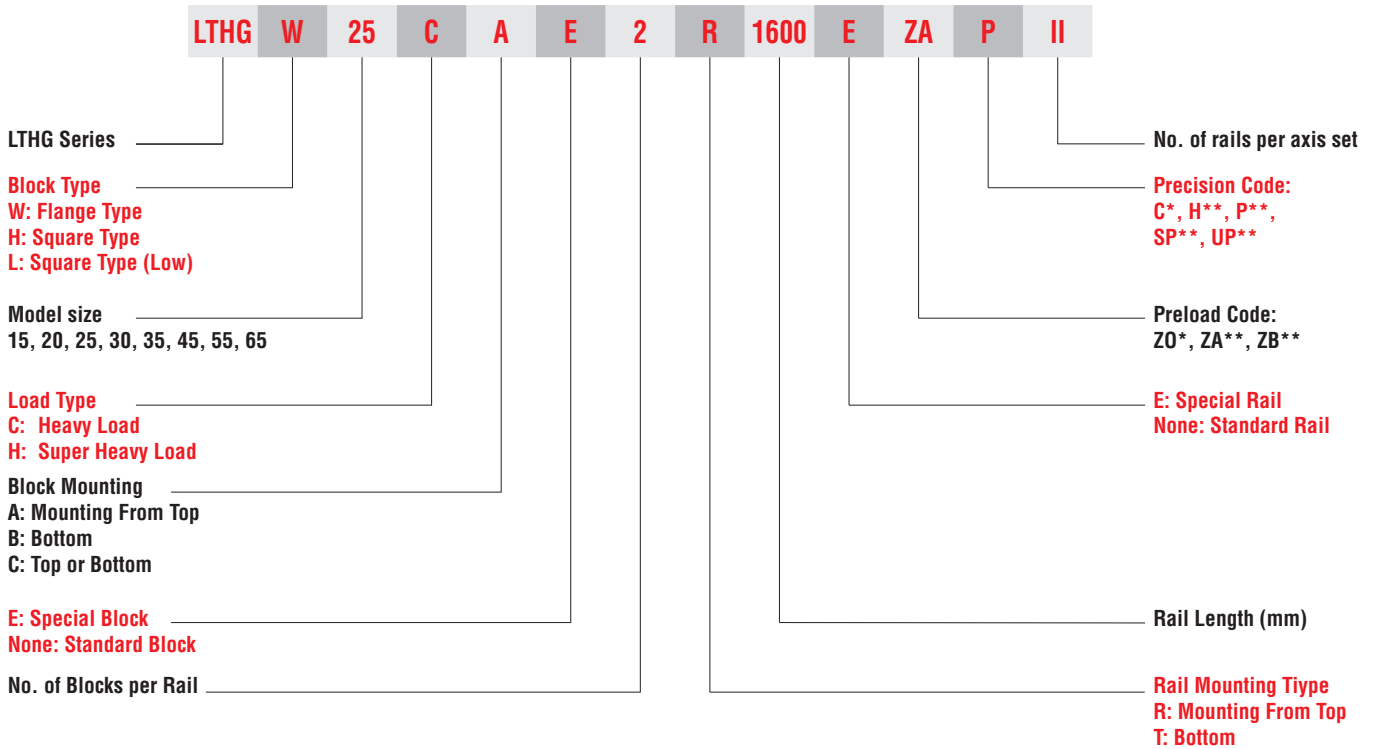
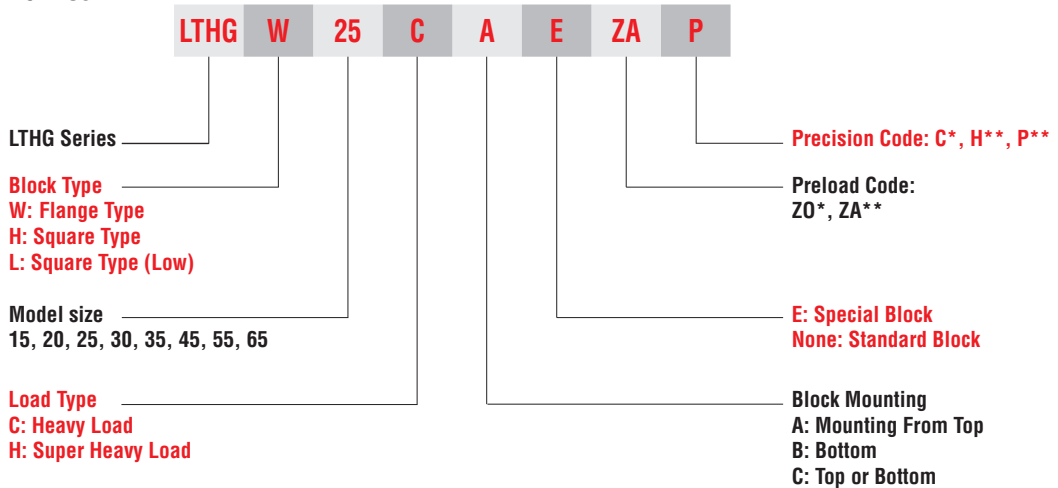


(1) Non-interchangeable type

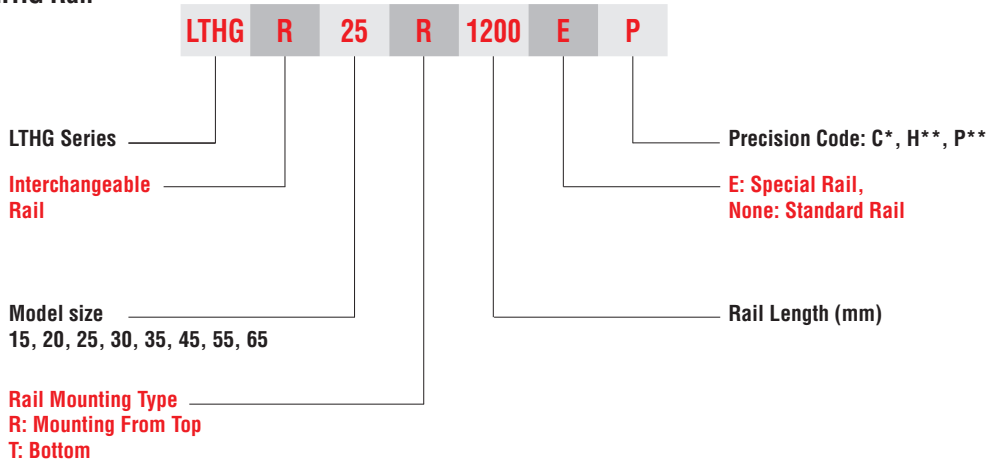


(2) Interchangeable type

° **Model Number of LTHG Block**



° **Model Number of LTHG Rail**



* Standard
 ** Upon request

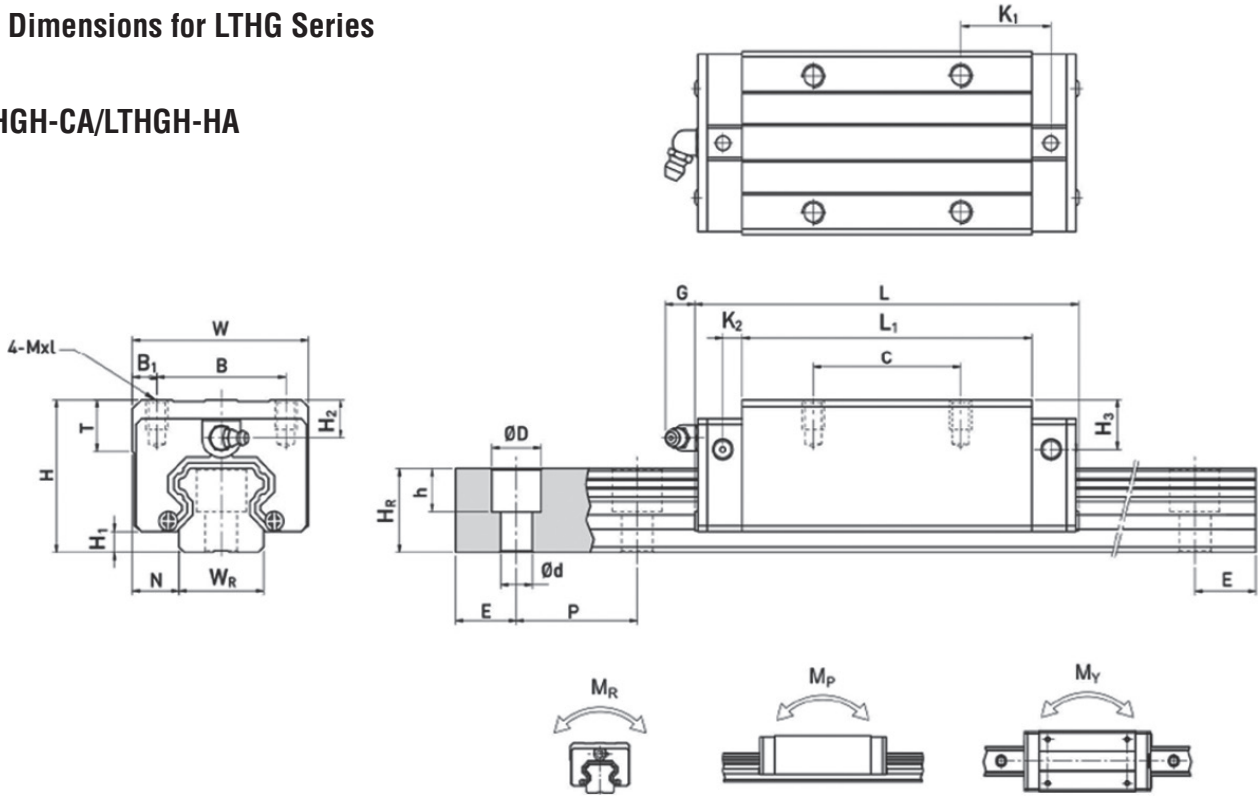


LTHG Series

Heavy Load Ball Type

2-1-13 Dimensions for LTHG Series

(1) LTHGH-CA/LTHGH-HA

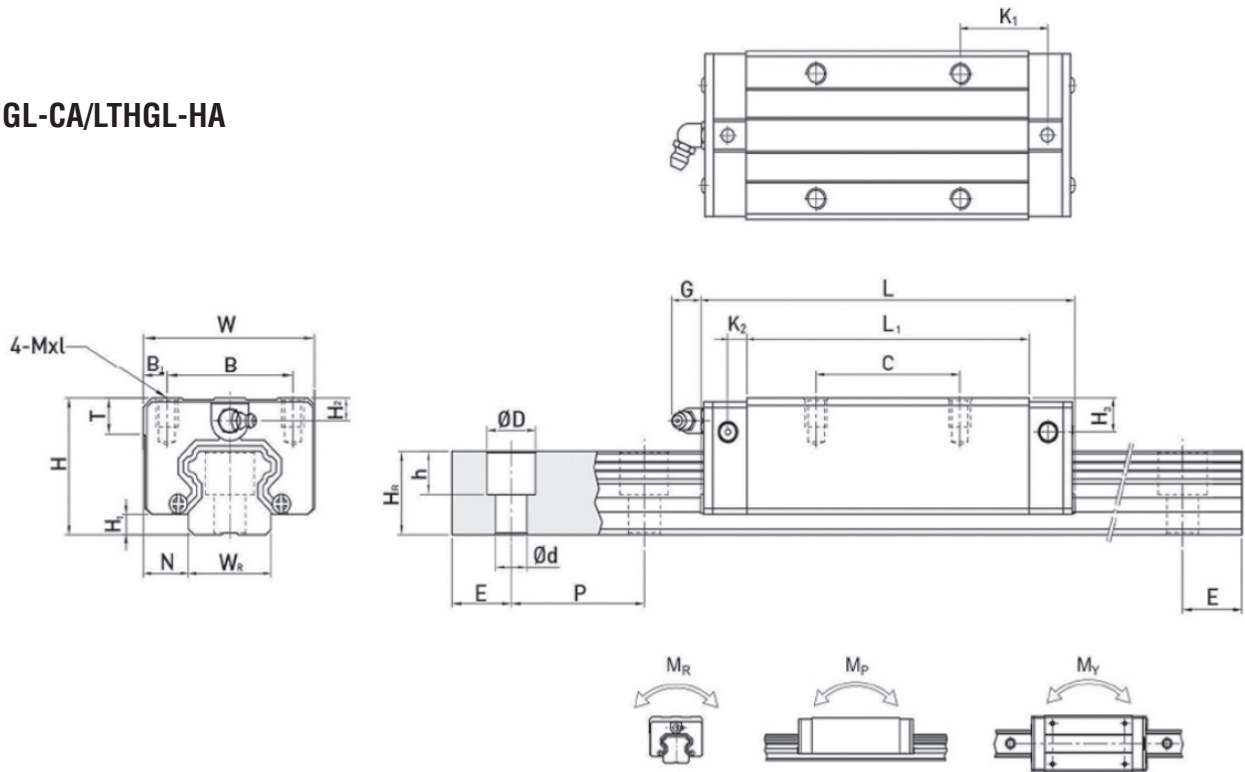


Model No.	Dimensions of assembly (mm)			Dimensions of Block (mm)											Dimensions of Rail (mm)						Mounting Bolt for Rail (mm)	Basic Dynamic Load Rating C _d (kN)	Basic Static Load Rating C ₀ (kN)	Static Rated Moment			Weight				
	H	H ₁	N	W	B	B ₁	C	L ₁	L	K ₁	K ₂	G	Mxl	T	H ₂	H ₃	W _R	H _R	D	h				d	P	E	M _R (kN-m)	M _P (kN-m)	M _Y (kN-m)	Block (kg)	Rail (kg/m)
LTHGH15CA	28	4.3	9.5	34	26	4	26	39.4	61.4	10	4.85	5.3	M4x5	6	7.95	7.7	15	15	7.5	5.3	4.5	60	20	M4x16	11.38	16.97	0.12	0.10	0.10	0.18	1.45
LTHGH20CA	30	4.6	12	44	32	6	36	50.5	77.5	12.25	6	12	M5x6	8	6	6	20	17.5	9.5	8.5	6	60	20	M5x16	17.75	27.76	0.27	0.20	0.20	0.30	2.21
LTHGH20HA							50	65.2	92.2	12.6															21.18	35.9	0.35	0.35	0.35	0.39	
LTHGH25CA	40	5.5	12.5	48	35	6.5	35	58	84	15.7	6	12	M6x8	8	10	9	23	22	11	9	7	60	20	M6x20	26.48	36.49	0.42	0.33	0.33	0.51	3.21
LTHGH25HA							50	78.6	104.6	18.5															32.75	49.44	0.56	0.57	0.57	0.69	
LTHGH30CA	45	6	16	60	40	10	40	70	97.4	20.25	6	12	M8x10	8.5	9.5	13.8	28	26	14	12	9	80	20	M8x25	38.74	52.19	0.66	0.53	0.53	0.88	4.47
LTHGH30HA							60	93	120.4	21.75															47.27	69.16	0.88	0.92	0.92	1.16	
LTHGH35CA	55	7.5	18	70	50	10	50	80	112.4	20.6	7	12	M8x12	10.2	16	19.6	34	29	14	12	9	80	20	M8x25	49.52	69.16	1.16	0.81	0.81	1.45	6.30
LTHGH35HA							72	105.8	138.2	22.5															60.21	91.63	1.54	1.40	1.40	1.92	
LTHGH45CA	70	9.5	20.5	86	60	13	60	97	139.4	23	10	12.9	M10x17	16	18.5	30.5	45	38	20	17	14	105	22.5	M12x35	77.57	102.71	1.98	1.55	1.55	2.73	10.41
LTHGH45HA							80	128.8	171.2	28.6															94.54	136.46	2.63	2.68	2.68	3.61	
LTHGH55CA	80	13	23.5	100	75	12.5	75	117.7	166.7	27.35	11	12.9	M12x18	17.5	22	29	53	44	23	20	16	120	30	M14x45	114.44	148.33	3.69	2.64	2.64	4.17	15.08
LTHGH55HA							95	155.8	204.8	36.4															139.35	196.2	4.88	4.57	4.57	5.49	
LTHGH65CA	90	15	31.5	126	76	25	70	144.2	200.2	43.1	14	12.9	M16x20	25	15	15	63	53	26	22	18	150	35	M16x50	163.63	215.33	6.65	4.27	4.27	7.00	21.18
LTHGH65HA							120	203.6	259.6	47.8															208.36	303.13	9.38	7.38	7.38	9.82	

Note: 1 Kgf = 9.81 N



(2) LTHGL-CA/LTHGL-HA

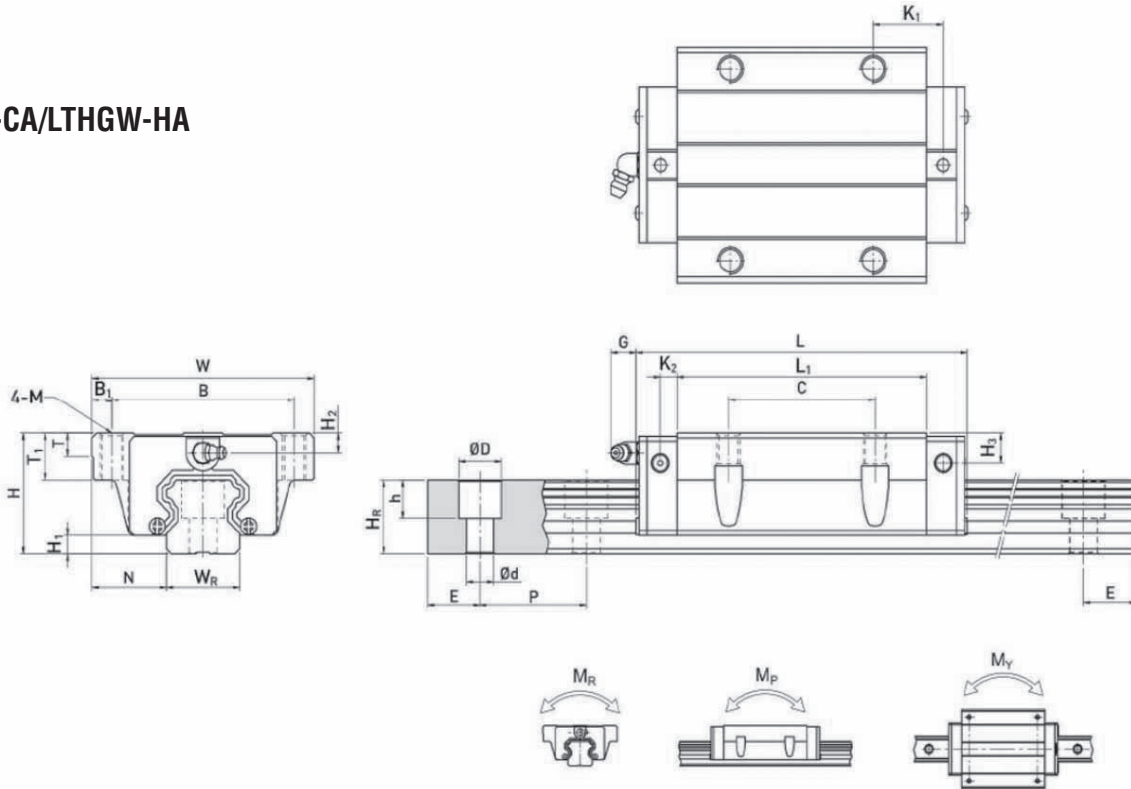


Model No.	Dimensions of assembly (mm)			Dimensions of Block (mm)													Dimensions of Rail (mm)						Mounting Bolt for Rail (mm)	Basic Dynamic Load Rating C ₀ (kN)	Basic Static Load Rating C ₀ (kN)	Static Rated Moment			Weight		
	H	H ₁	N	W	B	B ₁	C	L ₁	L	K ₁	K ₂	G	Mxl	T	H ₂	H ₃	W _R	H _R	D	h	d	P				E	M _R kN-m	M _P kN-m	M _Y kN-m	Block kg	Rail kg/m
LTHGL15CA	24	4.3	9.5	34	26	4	26	39.4	61.4	10	4.85	5.3	M4x4	6	3.95	3.7	15	15	7.5	5.3	4.5	60	20	M4x16	11.38	16.97	0.12	0.10	0.10	0.14	1.45
LTHGL25CA	36	5.5	12.5	48	35	6.5	35	58	84	15.7	6	12	M6x6	8	6	5	23	22	11	9	7	60	20	M6x20	26.48	36.49	0.42	0.33	0.33	0.42	3.21
LTHGL25HA							50	78.6	104.6	18.5															47.27	69.16	0.88	0.92	0.92	1.03	
LTHGL30CA	42	6	16	60	40	10	40	70	97.4	20.25	6	12	M8x10	8.5	6.5	10.8	28	26	14	12	9	80	20	M8x25	38.74	52.19	0.66	0.53	0.53	0.78	4.47
LTHGL30HA							60	93	120.4	21.75															49.52	69.16	1.16	0.81	0.81	1.14	
LTHGL35CA	48	7.5	18	70	50	10	50	80	112.4	20.6	7	12	M8x12	10.2	9	12.6	34	29	14	12	9	80	20	M8x25	49.52	69.16	1.16	0.81	0.81	1.14	6.30
LTHGL35HA							72	105.8	138.2	22.5															60.21	91.63	1.54	1.40	1.40	1.52	
LTHGL45CA	60	9.5	20.5	86	60	13	60	97	139.4	23	10	12.9	M10x17	16	8.5	20.5	45	38	20	17	14	105	22.5	M12x35	77.57	102.71	1.98	1.55	1.55	2.08	10.41
LTHGL45HA							80	128.8	171.2	28.6															94.54	136.46	2.63	2.68	2.68	2.75	
LTHGH55CA	70	13	23.5	100	75	12.5	75	117.7	166.7	27.35	11	12.9	M12x18	17.5	12	19	53	44	23	20	16	120	30	M14x45	114.44	148.33	3.69	2.64	2.64	3.25	15.08
LTHGL55HA							95	155.8	204.8	36.4															139.35	196.2	4.88	4.57	4.57	4.27	

Note: 1 Kgf = 9.81 N



(3) LTHGW-CA/LTHGW-HA

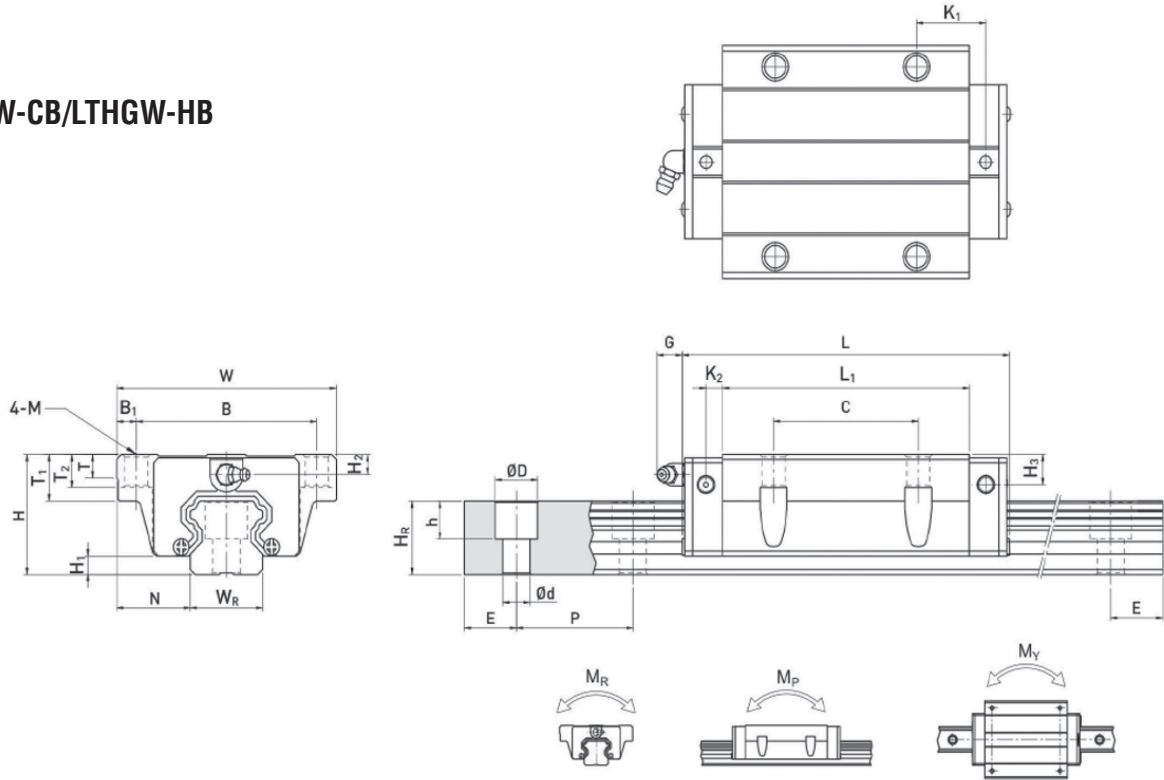


Model No.	Dimensions of assembly (mm)			Dimensions of Block (mm)														Dimensions of Rail (mm)						Mounting Bolt for Rail (mm)	Basic Dynamic Load Rating C(kN)	Basic Static Load Rating Co(kN)	Static Rated Moment			Weight		
	H	H ₁	N	W	B	B ₁	C	L ₁	L	K ₁	K ₂	G	M	T	T ₁	H ₂	H ₃	W _R	H _R	D	h	d	P				E	M _x (kN-m)	M _y (kN-m)	M _z (kN-m)	Block (kg)	Rail (kg/m)
LTHGW15CA	24	4.3	16	47	38	4.5	30	39.4	61.4	8	4.85	5.3	M5	6	8.9	3.95	3.7	15	15	7.5	5.3	4.5	60	20	M4x16	11.38	16.97	0.12	0.10	0.10	0.17	1.45
LTHGW20CA	30	4.6	21.5	63	53	5	40	50.5	77.5	10.25	6	12	M6	8	10	6	6	20	17.5	9.5	8.5	6	60	20	M5x16	17.75	27.76	0.27	0.20	0.20	0.40	2.21
LTHGW20HA								65.2	92.2	17.6																21.18	35.9	0.35	0.35	0.35	0.52	
LTHGW25CA	36	5.5	23.5	70	57	6.5	45	58	84	10.7	6	12	M8	8	14	6	5	23	22	11	9	7	60	20	M6x20	26.48	36.49	0.42	0.33	0.33	0.59	3.21
LTHGW25HA								78.6	104.6	21																32.75	49.44	0.56	0.57	0.57	0.80	
LTHGW30CA	42	6	31	90	72	9	52	70	97.4	14.25	6	12	M10	8.5	16	6.5	10.8	28	26	14	12	9	80	20	M8x25	38.74	52.19	0.66	0.53	0.53	1.09	4.47
LTHGW30HA								93	120.4	25.75																47.27	69.16	0.88	0.92	0.92	1.44	
LTHGW35CA	48	7.5	33	100	82	9	62	80	112.4	14.6	7	12	M10	10.1	18	9	12.6	34	29	14	12	9	80	20	M8x25	49.52	69.16	1.16	0.81	0.81	1.56	6.30
LTHGW35HA								105.8	138.2	27.5																60.21	91.63	1.54	1.40	1.40	2.06	
LTHGW45CA	60	9.5	37.5	120	100	10	80	97	139.4	13	10	12.9	M12	15.1	22	8.5	20.5	45	38	20	17	14	105	22.5	M12x35	77.57	102.71	1.98	1.55	1.55	2.79	10.41
LTHGW45HA								128.8	171.2	28.9																94.54	136.46	2.63	2.68	2.68	3.69	
LTHGW55CA	70	13	43.5	140	116	12	95	117.7	166.7	17.35	11	12.9	M14	17.5	26.5	12	19	53	44	23	20	16	120	30	M14x45	114.44	148.33	3.69	2.64	2.64	4.52	15.08
LTHGW55HA								155.8	204.8	36.4																139.35	196.2	4.88	4.57	4.57	5.96	
LTHGW65CA	90	15	53.5	170	142	14	110	144.2	200.2	23.1	14	12.9	M16	25	37.5	15	15	63	53	26	22	18	150	35	M16x50	163.63	215.33	6.65	4.27	4.27	9.17	21.18
LTHGW65HA								203.6	259.6	52.8																208.36	303.13	9.38	7.38	7.38	12.89	

Note: 1 Kgf = 9.81 N



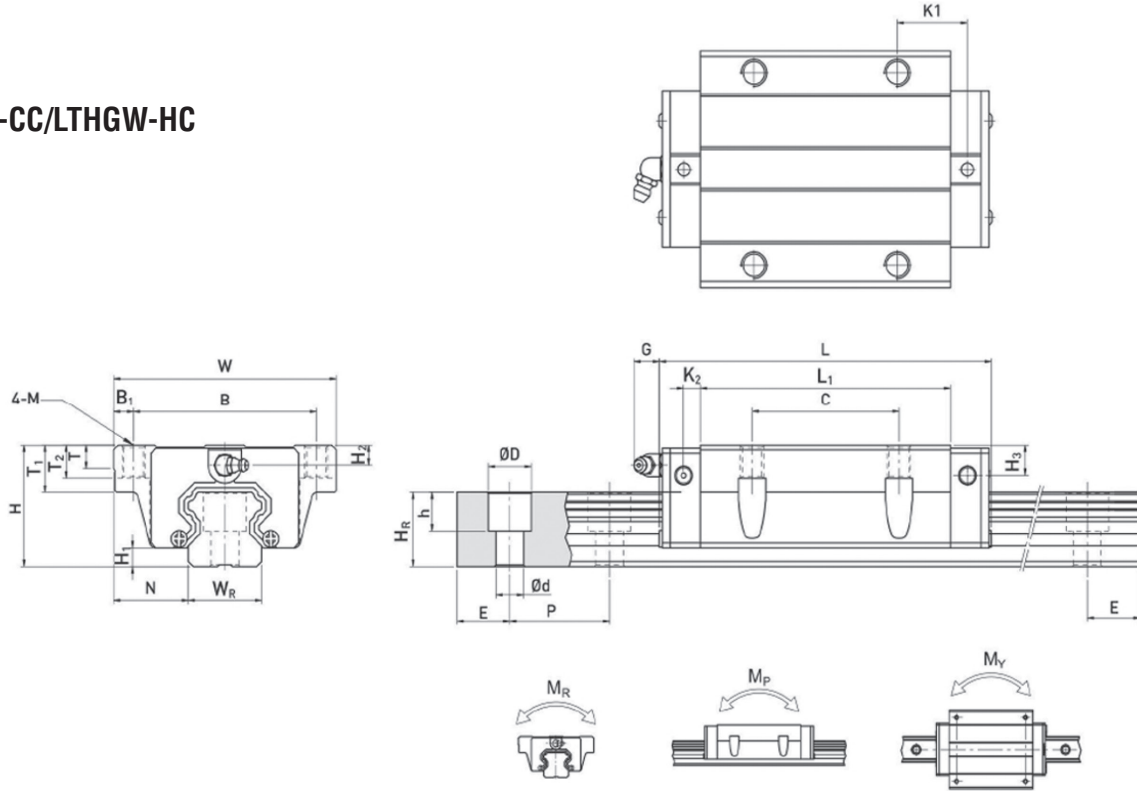
(4) LTHGW-CB/LTHGW-HB



Model No.	Dimensions of assembly (mm)			Dimensions of Block (mm)														Dimensions of Rail (mm)						Mounting Bolt for Rail	Basic Dynamic Load Rating	Basic Static Load Rating	Static Rated Moment			Weight			
	H	H ₁	N	W	B	B ₁	C	L ₁	L	K ₁	K ₂	G	M	T	T ₁	T ₂	H ₂	H ₃	W _R	H _R	D	h	d				P	E	(mm)	C ₀ (kN)	C ₀ (kN)	M _R kN-m	M _P kN-m
LTHGW15CB	24	4.3	16	47	38	4.5	30	39.4	61.4	8	4.85	5.3	Ø4.5	6	8.9	6.95	3.95	3.7	15	15	7.5	5.3	4.5	60	20	M4x16	11.38	16.97	0.12	0.10	0.10	0.17	1.45
LTHGW20CB	30	4.6	21.5	63	53	5	40	50.5	77.5	10.25	6	12	Ø6	8	10	9.5	6	6	20	17.5	9.5	8.5	6	60	20	M5x16	17.75	27.76	0.27	0.20	0.20	0.40	2.21
LTHGW20HB								65.2	92.2	17.6																	21.18	35.9	0.35	0.35	0.35	0.52	
LTHGW25CB	36	5.5	23.5	70	57	6.5	45	58	84	10.7	6	12	Ø7	8	14	10	6	5	23	22	11	9	7	60	20	M6x20	26.48	36.49	0.42	0.33	0.33	0.59	3.21
LTHGW25HB								78.6	104.6	21																	32.75	49.44	0.56	0.57	0.57	0.80	
LTHGW30CB	42	6	31	90	72	9	52	70	97.4	14.25	6	12	Ø9	8.5	16	10	6.5	10.8	28	26	14	12	9	80	20	M8x25	38.74	52.19	0.66	0.53	0.53	1.09	4.47
LTHGW30HB								93	120.4	25.75																	47.27	69.16	0.88	0.92	0.92	1.44	
LTHGW35CB	48	7.5	33	100	82	9	62	80	112.4	14.6	7	12	Ø9	10.1	18	13	9	12.6	34	29	14	12	9	80	20	M8x25	49.52	69.16	1.16	0.81	0.81	1.56	6.30
LTHGW35HB								105.8	138.2	27.5																	60.21	91.63	1.54	1.40	1.40	2.06	
LTHGW45CB	60	9.5	37.5	120	100	10	80	97	139.4	13	10	12.9	Ø11	15.1	22	15	8.5	20.5	45	38	20	17	14	105	22.5	M12x35	77.57	102.71	1.98	1.55	1.55	2.79	10.41
LTHGW45HB								128.8	171.2	28.9																	94.54	136.46	2.63	2.68	2.68	3.69	
LTHGW55CB	70	13	43.5	140	116	12	95	117.7	166.7	17.35	11	12.9	Ø14	17.5	26.5	17	12	19	53	44	23	20	16	120	30	M14x45	114.44	148.33	3.69	2.64	2.64	4.52	15.08
LTHGW55HB								155.8	204.8	36.4																	139.35	196.2	4.88	4.57	4.57	5.96	
LTHGW65CB	90	15	53.5	170	142	14	110	144.2	200.2	23.1	14	12.9	Ø16	25	37.5	23	15	15	63	53	26	22	18	150	35	M16x50	163.63	215.33	6.65	4.27	4.27	9.17	21.18
LTHGW65HB								203.6	259.6	52.8																	208.36	303.13	9.38	7.38	7.38	12.89	

Note: 1 Kgf = 9.81 N

(5) LTHGW-CC/LTHGW-HC

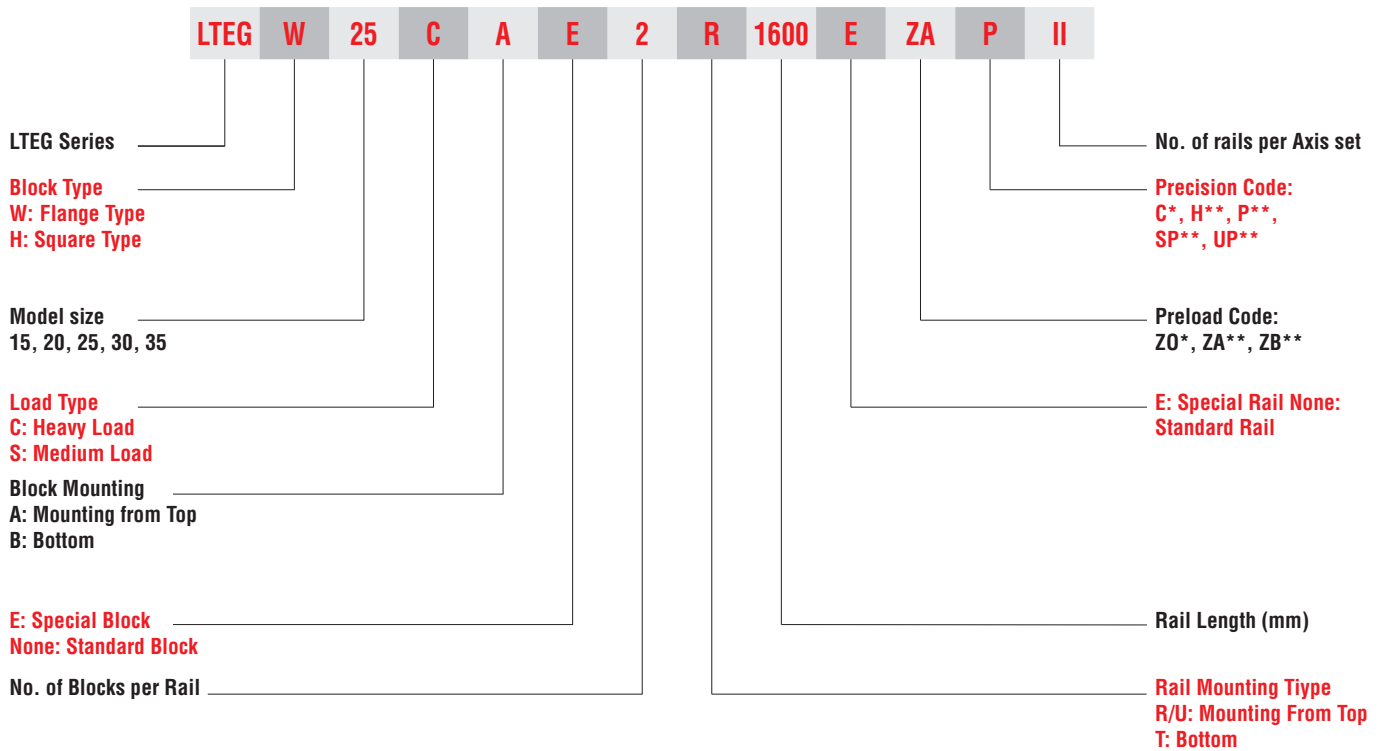


Model No.	Dimensions of assembly (mm)			Dimensions of Block (mm)														Dimensions of Rail (mm)						Mounting Bolt for Rail (mm)	Basic Dynamic Load Rating C _d (kN)	Basic Static Load Rating C ₀ (kN)	Static Rated Moment			Weight			
	H	H ₁	N	W	B	B ₁	C	L ₁	L	K ₁	K ₂	G	M	T	T ₁	T ₂	H ₂	H ₃	W _R	H _R	D	h	d				P	E	M _R (kN-m)	M _P (kN-m)	M _Y (kN-m)	Block (kg)	Rail (kg/m)
LTHGW15CC	24	4.3	16	47	38	4.5	30	39.4	61.4	8	4.85	5.3	M5	6	8.9	6.95	3.95	3.7	15	15	7.5	5.3	4.5	60	20	M4x16	11.38	16.97	0.12	0.10	0.10	0.17	1.45
LTHGW20CC	30	4.6	21.5	63	53	5	40	50.5	77.5	10.25	6	12	M6	8	10	9.5	6	6	20	17.5	9.5	8.5	6	60	20	M5x16	17.75	27.76	0.27	0.20	0.20	0.40	2.21
LTHGW20HC								65.2	92.2	17.6																	21.18	35.9	0.35	0.35	0.35	0.52	
LTHGW25CC	36	5.5	23.5	70	57	6.5	45	58	84	10.7	6	12	M8	8	14	10	6	5	23	22	11	9	7	60	20	M6x20	26.48	36.49	0.42	0.33	0.33	0.59	3.21
LTHGW25HC								78.6	104.6	21																	32.75	49.44	0.56	0.57	0.57	0.80	
LTHGW30CC	42	6	31	90	72	9	52	70	97.4	14.25	6	12	M10	8.5	16	10	6.5	10.8	28	26	14	12	9	80	20	M8x25	38.74	52.19	0.66	0.53	0.53	1.09	4.47
LTHGW30HC								93	120.4	25.75																	47.27	69.16	0.88	0.92	0.92	1.44	
LTHGW35CC	48	7.5	33	100	82	9	62	80	112.4	14.6	7	12	M10	10.1	18	13	9	12.6	34	29	14	12	9	80	20	M8x25	49.52	69.16	1.16	0.81	0.81	1.56	6.30
LTHGW35HC								105.8	138.2	27.5																	60.21	91.63	1.54	1.40	1.40	2.06	
LTHGW45CC	60	9.5	37.5	120	100	10	80	97	139.4	13	10	12.9	M12	15.1	22	15	8.5	20.5	45	38	20	17	14	105	22.5	M12x35	77.57	102.71	1.98	1.55	1.55	2.79	10.41
LTHGW45HC								128.8	171.2	28.9																	94.54	136.46	2.63	2.68	2.68	3.69	
LTHGW55CC	70	13	43.5	140	116	12	95	117.7	166.7	17.35	11	12.9	M14	17.5	26.5	17	12	19	53	44	23	20	16	120	30	M14x45	114.44	148.33	3.69	2.64	2.64	4.52	15.08
LTHGW55HC								155.8	204.8	36.4																	139.35	196.2	4.88	4.57	4.57	5.96	
LTHGW65CC	90	15	53.5	170	142	14	110	144.2	200.2	23.1	14	12.9	M16	25	37.5	23	15	15	63	53	26	22	18	150	35	M16x50	163.63	215.33	6.65	4.27	4.27	9.17	21.18
LTHGW65HC								203.6	259.6	52.8																	208.36	303.13	9.38	7.38	7.38	12.89	

Note: 1 Kgf = 9.81 N

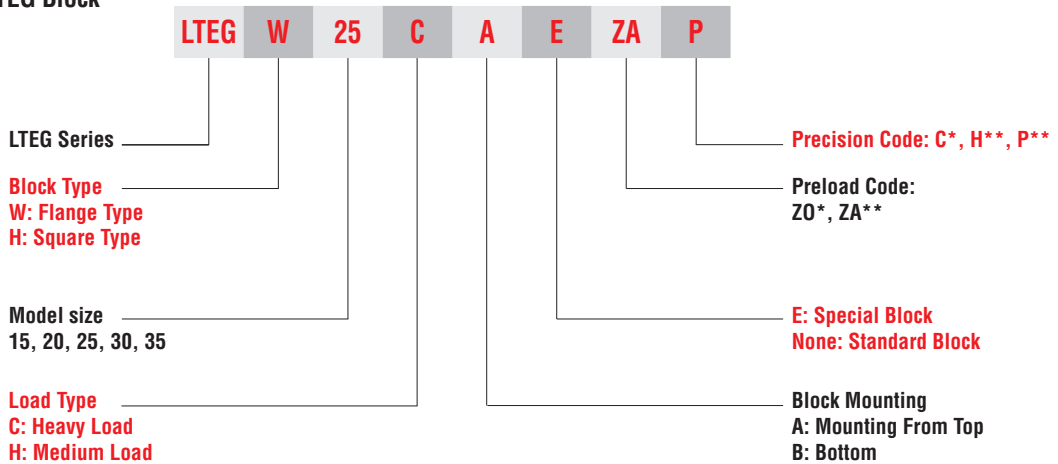


(1) Non-interchangeable type

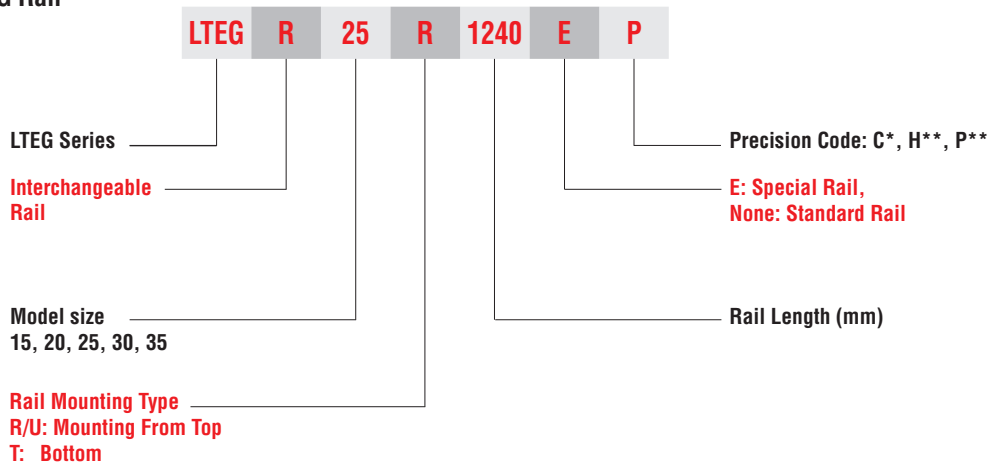


(2) Interchangeable type

° Model Number of LTEG Block



° Model Number of LTHG Rail

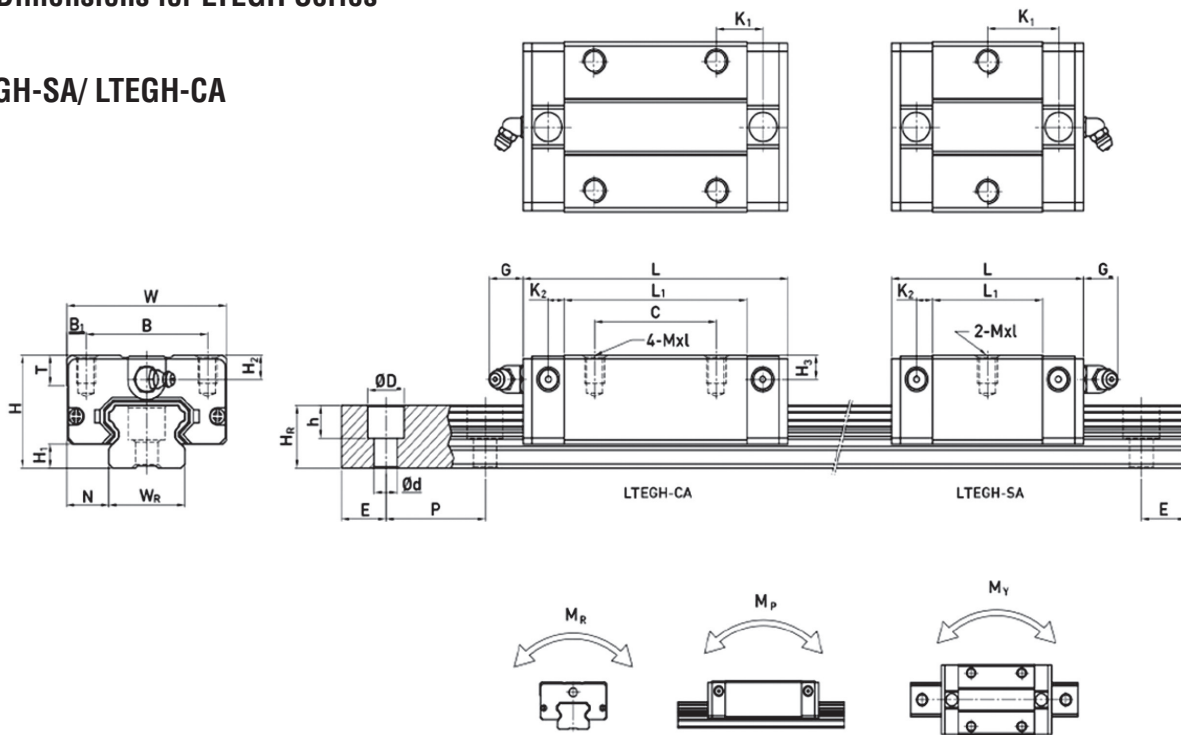


* Standard
** Upon request



2-2-13 Dimensions for LTEGH Series

(1) LTEGH-SA/ LTEGH-CA



Model No.	Dimensions of assembly (mm)							Dimensions of Block (mm)										Dimensions of Rail (mm)						Mounting Bolt for Rail (mm)	Basic Dynamic Load Rating C (kN)	Basic Static Load Rating C ₀ (kN)	Static Rated Moment			Weight	
	H	H ₁	N	W	B	B ₁	C	L ₁	L	K ₁	K ₂	G	Mxl	T	H ₂	H ₃	W _R	H _r	D	h	d	P	E				M _R (kN-m)	M _P (kN-m)	M _Y (kN-m)	Block (kg)	Rail (kg/m)
LTEGH15SA	24	4.5	9.5	34	26	4	-	23.1	40.1	14.8	-	-	-	6	5.5	6	15	12.5	7.5	5.5	4.5	60	20	M4x16	5.35	9.40	0.08	0.04	0.04	0.09	1.25
LTEGH15CA							26	39.8	56.8	10.15	-	-	-											M4x16	7.83	16.19	0.13	0.10	0.10	0.15	
LTEGH20SA	28	6	11	42	32	5	-	29	50	18.75	-	-	-	7.5	6	6	20	15.5	9.5	8.5	6	60	20	M5x16	7.23	12.74	0.13	0.06	0.06	0.15	2.08
LTEGH20CA							32	48.1	69.1	12.3	4.15	12	M5x7																M5x16	10.31	
LTEGH25SA	33	7	12.5	48	35	6.5	-	35.5	59.1	21.9	-	-	-	8	8	8	23	18	11	9	7	60	20	M6x20	11.40	19.50	0.23	0.12	0.12	0.25	2.67
LTEGH25CA							35	59	82.6	16.15	4.55	12	M6x9																M6x20	16.27	
LTEGH30SA	42	10	16	60	40	10	-	41.5	69.5	26.75	-	-	-	9	8	9	28	23	11	9	7	80	20	M6x25	16.42	28.10	0.40	0.21	0.21	0.45	4.35
LTEGH30CA							40	70.1	98.1	21.05	6	12	M8x12																M6x25	23.70	
LTEGH35SA	48	11	18	70	50	10	-	45	75	28.5	-	-	-	10	8.5	8.5	34	27.5	14	12	9	80	20	M8x25	22.66	37.38	0.56	0.31	0.31	0.66	6.14
LTEGH35CA							50	78f	108	20	7	12	M8x12																M8x25	33.35	

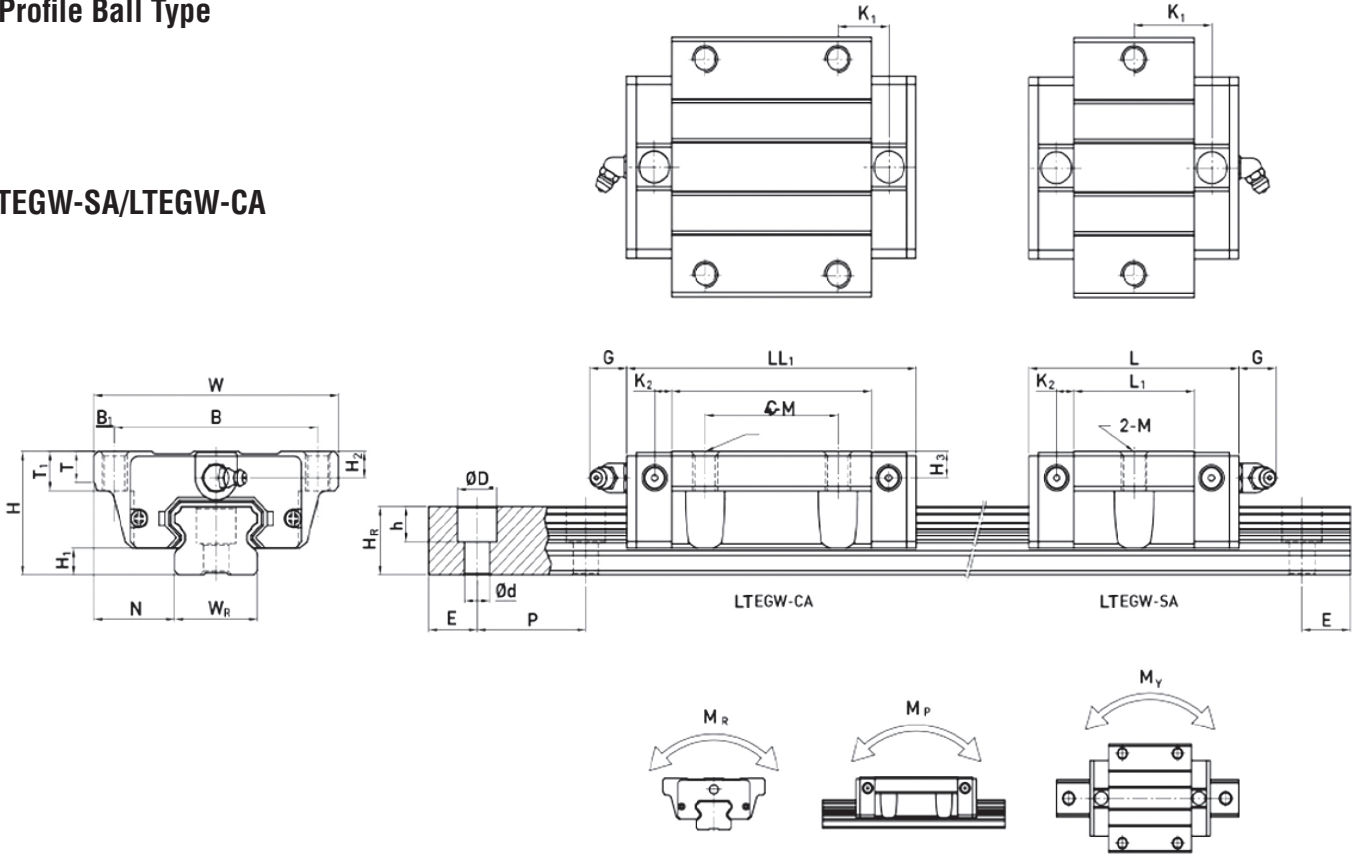
Note: 1Kgf = 9.81 N



LTEGW Series

Low Profile Ball Type

(2) LTEGW-SA/LTEGW-CA

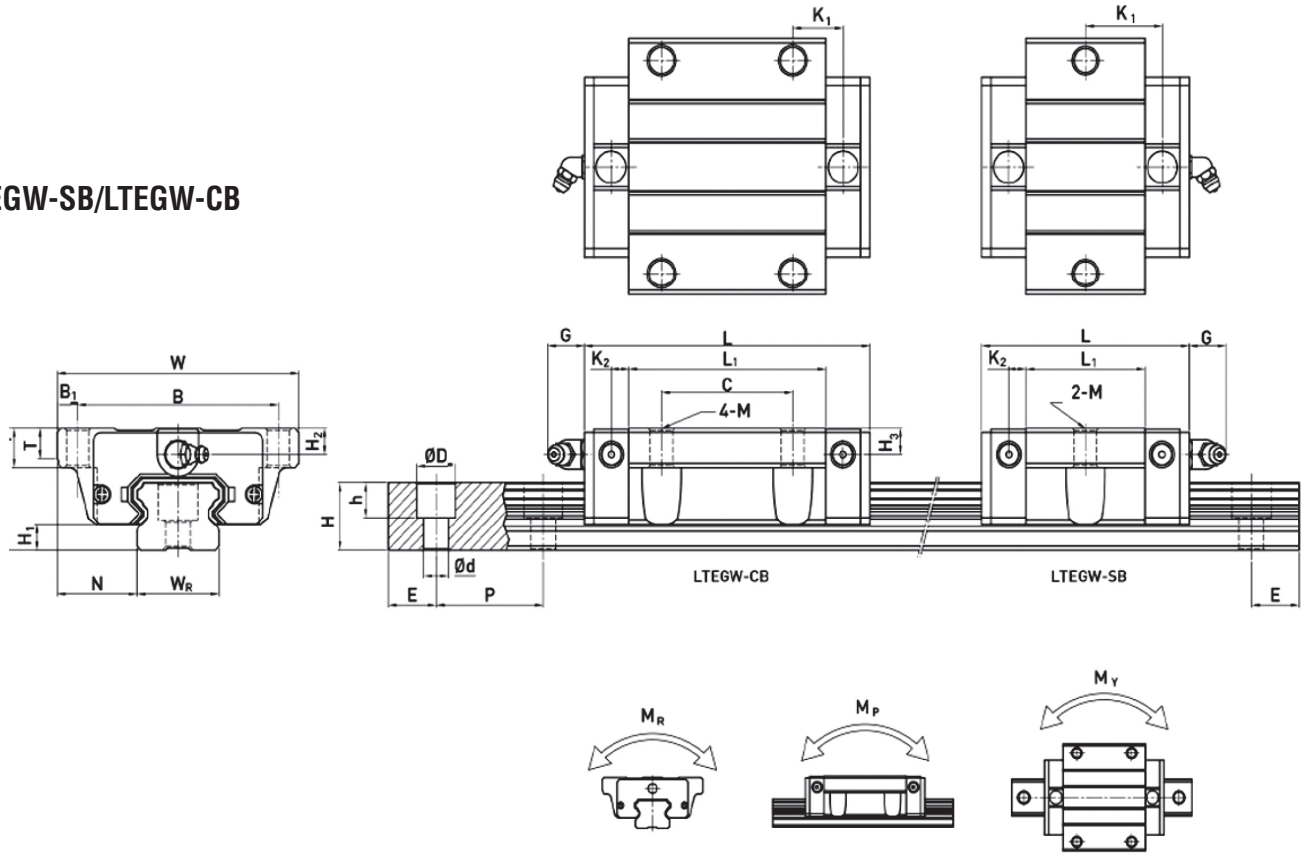


Model No.	Dimensions of assembly (mm)			Dimensions of Block (mm)														Dimensions of Rail (mm)										Mounting Bolt for Rail (mm)	Basic Dynamic Load Rating C(kN)	Basic Static Load Rating C ₀ (kN)	Static Rated Moment			Weight	
	H	H ₁	N	W	B	B ₁	C	L ₁	L	K ₁	K ₂	G	M	T	T ₁	H ₂	H ₃	W _R	H _R	D	h	d	P	E	M _a (kN-m)	M _b (kN-m)	M _v (kN-m)				Block (kg)	Rail (kg/m)			
LTEGW15SA	24	4.5	18.5	52	41	5.5	-	23.1	40.1	14.8	-	3.5	5.7	M5	5	7	5.5	6	15	12.5	6	4.5	3.5	60	20	M3x16	5.35	9.40	0.08	0.04	0.04	0.12	1.25		
LTEGW15CA							26	39.8	56.8	10.15																									
LTEGW20SA	36	5.5	23.5	70	57	6.5	-	29	50	18.75	-	4.15	12	M6	7	9	6	6	20	15.5	9.5	8.5	6	60	20	M5x16	7.23	12.74	0.13	0.06	0.06	0.19	2.08		
LTEGW20CA							32	48.1	69.1	12.3																									
LTEGW25SA	42	6	31	90	72	9	-	35.5	59.1	21.9	-	4.55	12	M8	7.5	10	8	8	23	18	11	9	7	60	20	M6x20	11.40	19.50	0.23	0.12	0.12	0.35	2.67		
LTEGW25CA							35	59	82.6	16.15																									
LTEGW30SA	48	7.5	33	100	82	9	-	41.5	69.5	26.75	-	6	12	M10	7	10	8	9	28	23	11	9	7	80	20	M6x25	16.42	28.10	0.40	0.21	0.21	0.62	4.35		
LTEGW30CA							40	70.1	98.1	21.05																									
LTEGW35SA	60	9.5	37.5	120	100	10	-	45	75	28.5	-	7	12	M10	10	13	8.5	8.5	34	27.5	14	12	9	80	20	M8x25	22.66	37.38	0.56	0.31	0.31	0.84	6.14		
LTEGW35CA							50	78	108	20																									

Note: 1 Kgf = 9.81 N



(3) LTEGW-SB/LTEGW-CB



Model No.	Dimensions of assembly (mm)			Dimensions of Block (mm)													Dimensions of Rail (mm)							Mounting Bolt for Rail (mm)	Basic Dynamic Load Rating C(kN)	Basic Static Load Rating C ₀ (kN)	Static Rated Moment			Weight			
	H	H ₁	N	W	B	B ₁	C	L ₁	L	K ₁	K ₂	G	M	T	T ₁	H ₂	H ₃	W _R	H _R	D	h	d	P				E	M _a kN-m	M _b kN-m	M _c kN-m	Block kg	Rail kg/m	
LTEGW15SB	24	4.5	18.5	52	41	5.5	-	23.1	40.1	14.8	-	3.5	5.7	Ø4.5	5	7	5.5	6	15	12.5	6	4.5	3.5	60	20	M3x16	5.35	9.40	0.08	0.04	0.04	0.12	1.25
LTEGW15CB							26	C	56.8	10.15																							
LTEGW20SB	28	6	19.5	59	49	5	-	29	50	18.75	-	4.15	12	Ø5.5	7	9	6	6	20	15.5	9.5	8.5	6	60	20	M5x16	7.23	12.74	0.13	0.06	0.06	0.19	2.08
LTEGW20CB							32	48.1	69.1	12.3																							
LTEGW25SB	33	7	25	73	60	6.5	-	35.5	59.1	21.9	-	4.55	12	Ø7	7.5	10	8	8	23	18	11	9	7	60	20	M6x20	11.40	19.50	0.23	0.12	0.12	0.35	2.67
LTEGW25CB							35	59	82.6	16.15																							
LTEGW30SB	42	10	31	90	72	9	-	41.5	69.5	26.75	-	6	12	Ø9	7	10	8	9	28	23	11	9	7	80	20	M6x25	16.42	28.10	0.40	0.21	0.21	0.62	4.35
LTEGW30CB							40	70.1	98.1	21.05																							
LTEGW35SB	48	11	33	100	82	9	-	45	75	28.5	-	7	12	Ø9	10	13	8.5	8.5	34	27.5	14	12	9	80	20	M8x25	22.66	37.38	0.56	0.31	0.31	0.84	6.14
LTEGW35CB							50	78	108	20																							

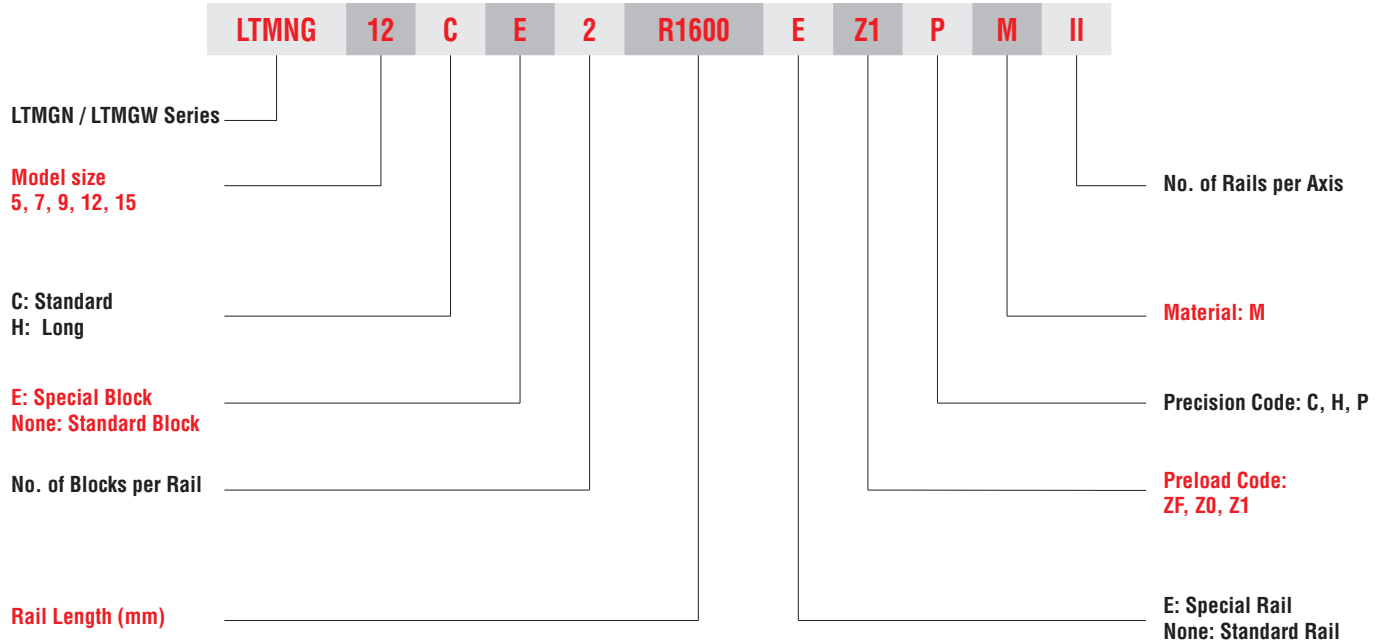
Note: 1 Kgf = 9.81 N



LTMGN Series

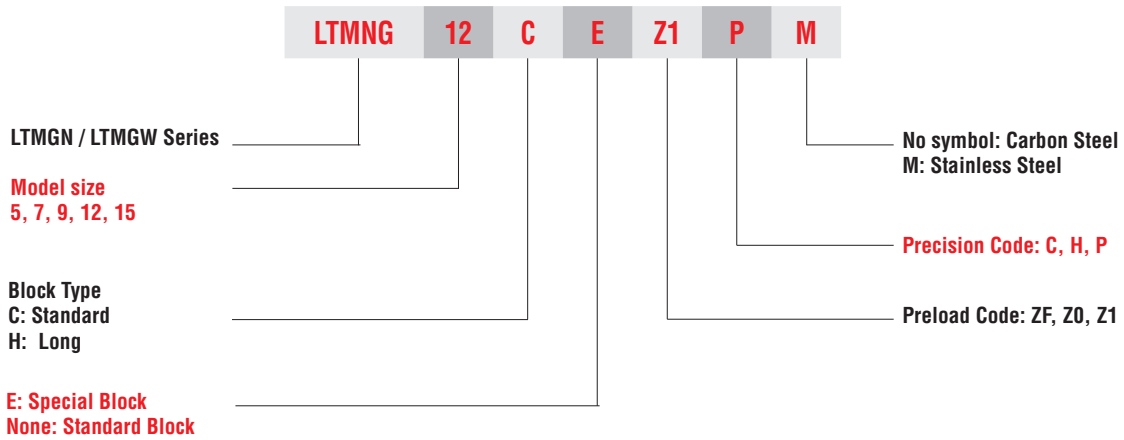
Miniature Type

(1) Non-interchangeable type

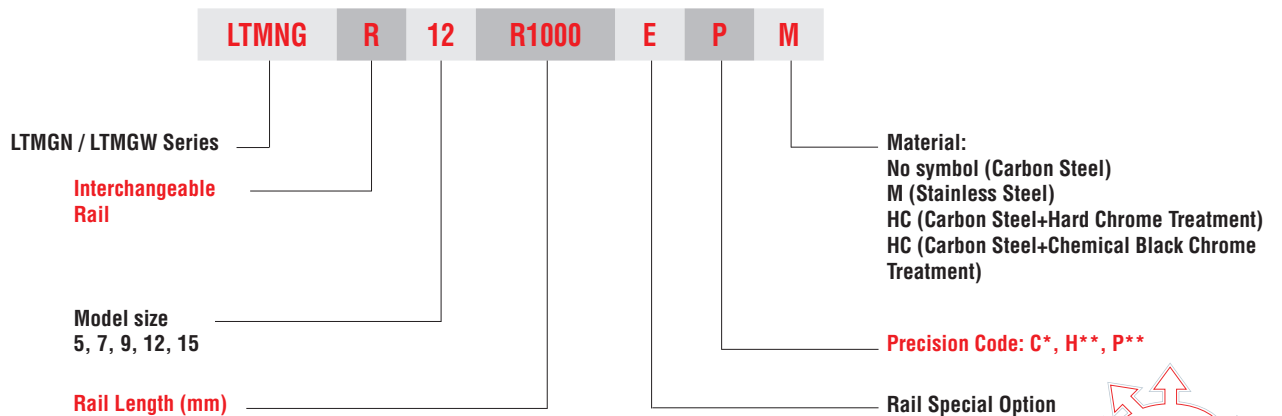


(2) Interchangeable type

° Interchangeable Block



° Interchangeable Rail



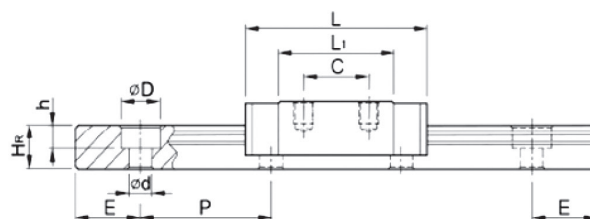
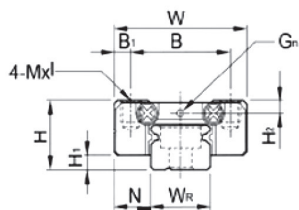
* Standard
** Upon request



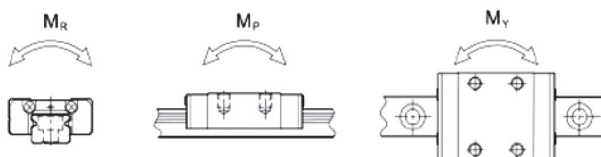
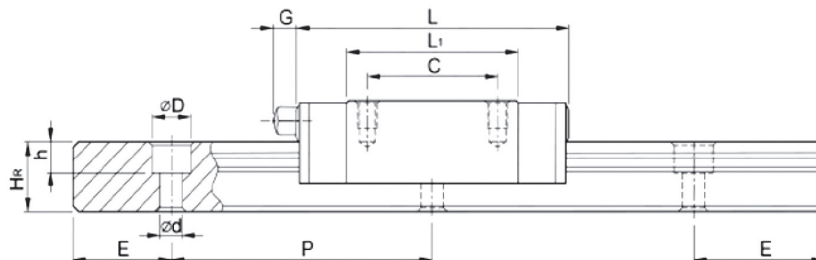
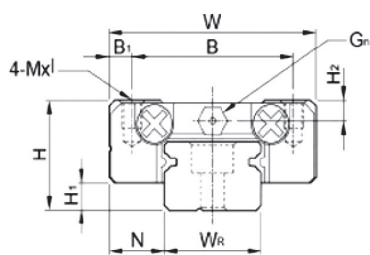
2-4-18 Dimensions for LTMGN Series

(1) LTMGN-C/ LTMGN-H

LTMGN7, LTMGN9, LTMGN12



LTMGN15



Model No.	Dimensions of assembly (mm)			Dimensions of Block (mm)										Dimensions of Rail (mm)					Mounting Bolt for Rail (mm)	Basic Dynamic Load Rating C (kN)	Basic Static Load Rating C ₀ (kN)	Static Rated Moment			Weight			
	H	H ₁	N	W	B	B ₁	C	L ₁	L	G	G _n	MxI	H ₂	W _R	H _R	D	h	d				P	E	M _R N-m	M _P N-m	M _Y N-m	Block kg	Rail kg/m
LTMGN7C	8	1.5	5	17	12	2.5	8	13.5	22.5	-	Ø1.2	M2x2.5	1.5	7	4.8	4.2	2.3	2.4	15	5	M2x6	0.98	1.24	4.70	2.84	2.84	0.010	0.22
LTMGN7H							13	21.8	56.8													2.84	4.80	0.015				
LTMGN9C	10	2	5.5	20	15	2.5	10	18.9	50	-	Ø1.4	M3x3	1.8	9	6.5	6	3.5	3.5	20	7.5	M3x8	1.86	2.55	11.76	7.35	7.35	0.016	0.38
LTMGN9H							16	29.9	69.1													18.62	18.62	0.026				
LTMGN12C	13	3	7.5	27	20	3.5	15	21.7	59.1	-	Ø2	M3x3.5	2.5	12	8	6	4.5	3.5	25	10	M3x8	2.84	3.92	25.48	13.72	13.72	0.034	0.65
LTMGN12H							20	32.4	82.6													36.26	36.26	0.054				
LTMGN15C	16	4	8.5	32	25	3.5	20	26.7	69.5	4.5	M3	M3x4	3	15	10	6	4.5	3.5	40	15	M3x10	4.61	5.59	45.08	21.56	21.56	0.059	1.06
LTMGN15H							25	43.4	98.1													57.82	57.82	0.092				

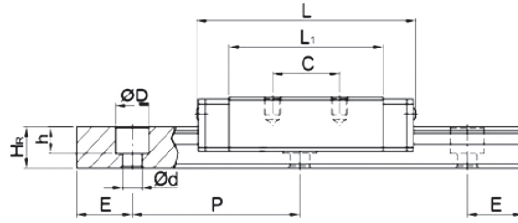
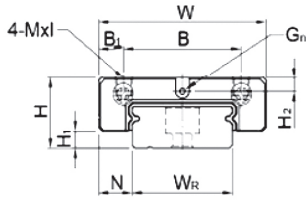
Note: 1 Kgf = 9.81 N



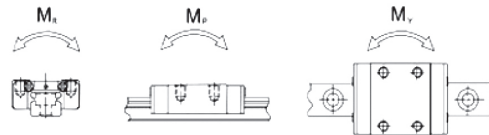
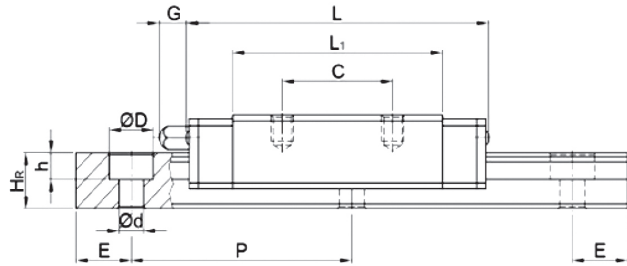
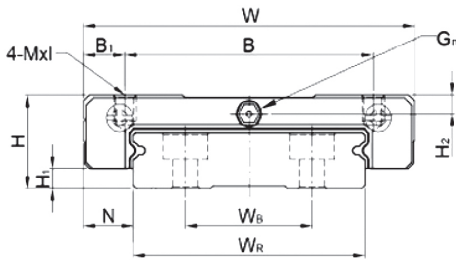
LTMGW Series
Miniature Type

(2) LTMGW-C/ LTMGW-H

LTMGW7, LTMGW9, LTMGW12



LTMGW15



Model No.	Dimensions of assembly (mm)			Dimensions of Block (mm)										Dimensions of Rail (mm)						Mounting Bolt for Rail (mm)	Basic Dynamic Load Rating C(kN)	Basic Static Load Rating Co(kN)	Static Rated Moment			Weight			
	H	H1	N	W	B	B1	C	L1	L	G	Gn	Mxl	H2	WR	WB	Hr	D	h	d				P	E	Mr N-m	Mp N-m	Mv N-m	Block kg	Rail kg/m
LTMGW7C	9	1.9	5.5	25	19	3	10	21	31.2	-	Ø1.2	M3x3	1.85	14	-	5.2	6	3.2	3.5	30	10	M3x6	1.37	2.06	15.70	7.14	7.14	0.020	0.51
LTMGW7H						19	30.8	41	23.45																15.53	15.53	0.029		
LTMGW9C	12	2.9	6	30	21	4.5	12	27.5	39.3	-	Ø1.2	M3x3	2.4	18	-	7	6	4.5	3.5	30	10	M3x8	2.75	4.12	40.12	18.96	18.96	0.040	0.91
LTMGW9H					23	3.5	24	38.5	50.7																54.54	34.00	34.00	0.057	
LTMGW12C	14	3.4	8	40	28	6	15	31.3	46.1	-	Ø1.2	M3x3.6	2.8	24	-	8.5	8	4.5	4.5	40	15	M4x8	3.92	5.59	70.34	27.80	27.80	0.071	1.49
LTMGW12H						28	45.6	60.4	102.70																57.37	57.37	0.103		
LTMGW15C	16	3.4	9	60	45	7.5	20	38	54.8	5.2	M3	M4x4.2	3.2	42	23	9.5	8	4.5	4.5	40	15	M4x10	6.77	9.22	199.34	56.66	56.66	0.143	2.86
LTMGW15H						35	57	73.8	299.01																122.60	122.60	0.215		

Note: 1 Kgf = 9.81 N



Unità / mm	LTHG/LTHGH/LTHGL/LTHGW/LTEG/LTEGH/LTEGW		
Parametro	commerciale (C)	alta (H)	precisa (P)
Tolleranza di altezza	± 0.1	± 0.04	0 -0.04
Tolleranza di larghezza	± 0.1	± 0.04	0 -0.04
Classe precarico	Z0, ZA	ZB	
Parallelismo tra le superfici carrelli C rispetto alla superficie A	vedere tabella sotto		
Parallelismo tra le superfici carrelli D rispetto alla superficie B			

Lunghezza rotaia (mm)	Grado di accuratezza (µm)		
	C	H	P
~100	12	7	3
100~200	14	9	4
200~300	15	10	5
300~500	17	12	6
500~700	20	12	7
700~900	22	15	8
900~1100	24	16	9
1100~1500	26	18	11
1500~1900	28	20	13
1900~2500	31	22	15
2500~3100	33	25	18
3100~3600	36	27	20
3600~4040	37	28	21

Gradi di precarico di ciascuna serie

La tabella sotto riportata mostra i gradi di precarico di ogni serie in funzione della percentuale sul carico dinamico (C). Il carico dinamico corrispondente può essere ricavato dalle tabelle dimensionali di ogni serie.

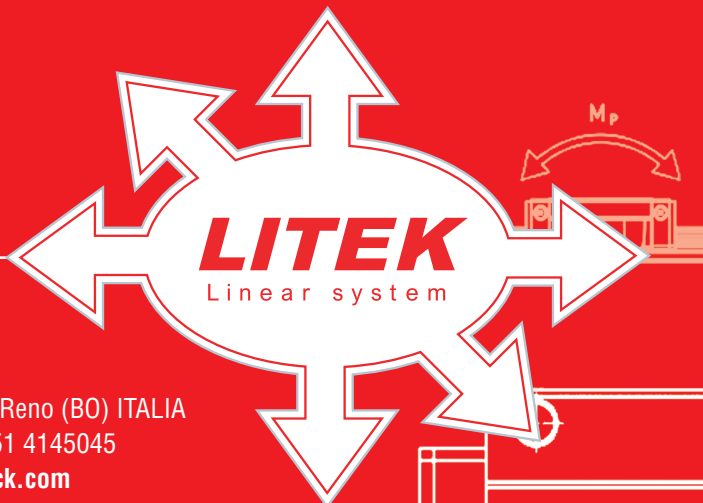
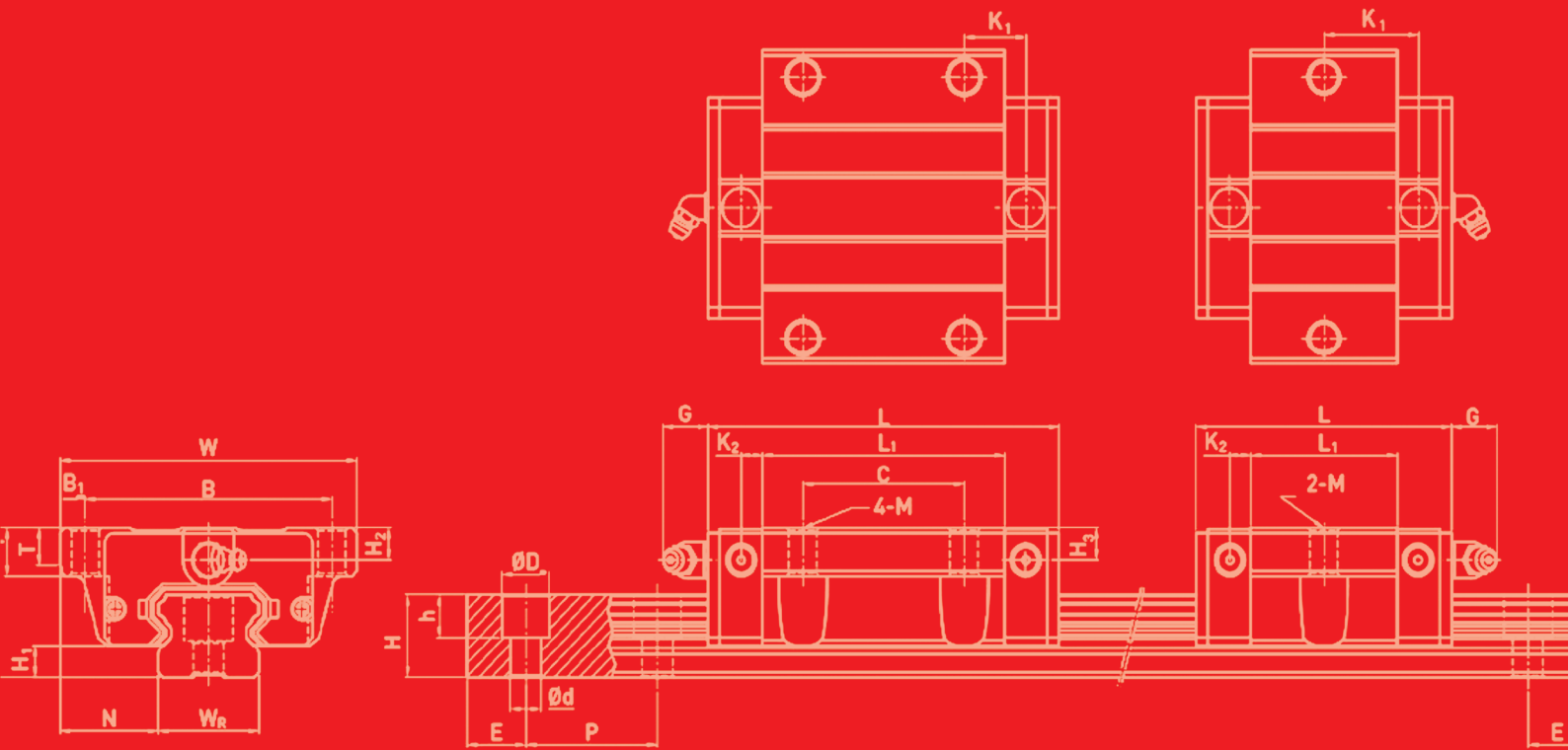
Precarico	
Precarico leggero (Z0)	0.02 C
Precarico medio (ZA)	0.05 C
Precarico elevato (ZB)	0.08 C

Selezione del precarico

La tabella sotto riportata mostra le classi di precarico in funzione delle condizioni operative e del tipo di applicazione.

Precarico	Condizioni operative	Esempi di applicazioni
Precarico leggero (Z0)	La direzione del carico è fissata, sono presenti leggeri shock e vibrazioni, e sono utilizzati due assi in parallelo. Non è richiesta alta precisione ed è presente un basso valore di attrito.	Macchine di saldatura, macchine confezionatrici, macchine industriali due assi, dispositivi per la movimentazione dei materiali.
Precarico medio (ZA)	Presenza di momenti ribaltanti. Configurazione a singolo asse. Richiesta di precarico leggero e elevata precisione.	Asse verticale delle macchine industriali, EDM, tavole di precisione a due assi, foratrici per circuiti stampati, robot industriali, torni a controllo numerico, apparecchiature di misura, rettifiche, macchine di verniciatura.
Precarico elevato (ZB)	Macchine soggette a vibrazioni e shock dove è richiesta massima rigidità. Applicazioni a carico elevato.	Centri di lavoro, torni a controllo numerico, rettifiche, frese, foratrici e macchine utensili.





LINEARTECK S.r.l.

Via Collodi, 3-B - 40012 Calderara di Reno (BO) ITALIA
Tel. 0039 051 4145011 - Fax 0039 051 4145045
info@linearteck.com - www.linearteck.com

